



Chartered  
Insurance  
Institute

Standards. Professionalism. Trust.

# Volunteer to make a difference in your local insurance community

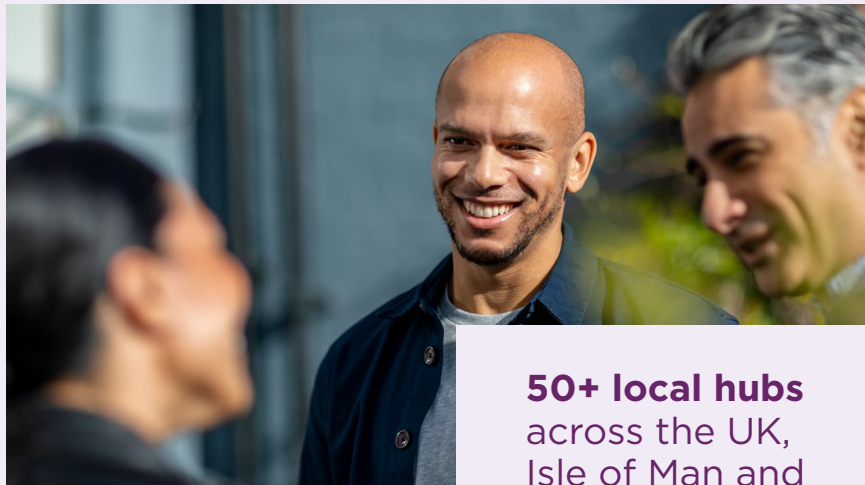
Find new purpose in 2024 by  
volunteering for your local institute.

## Who we are

The Chartered Insurance Institute's network of local institutes across the UK, Isle of Man and the Channel Islands offers existing and prospective CII members ongoing professional development at a local level.

Each institute's activity is shaped by a panel of member volunteers. Our backgrounds are in all disciplines – from claims, underwriting and broking to loss adjusting, financial services and more. We come together to support one common goal – to give back to our profession and help support others.

Our networking and social events provide a platform to develop business relationships, help boost confidence and support mental wellbeing; vital factors in supporting positivity and productivity for your employees. Most events are free to CII members or charged at a nominal fee.



**50+ local hubs**  
across the UK,  
Isle of Man and  
the Channel Islands



“ We come together to support one common goal – to give back to our profession and help support others. ”

## What we do

Our local institutes offer a constant source of support, inspiration and new possibilities to those working in insurance. We support your staff and colleagues through:



### Vital career development support

- > technical, market and regulatory CPD events and webinars
- > professional skills and business-related training
- > learning and exam assistance



### An influential networking community

- > platforms to develop business relationships
- > social and mental wellbeing events
- > local and national charity support



### Occasions which raise professional and corporate profiles

- > support for local schools, colleges and universities
- > awards and prizes for excellence

## What are we looking for?

We are looking to grow the number of volunteers who actively shape activities in their local institute. Each institute is steered by a council of member volunteers – could this soon be you?

Each council meets a minimum of quarterly each year, both virtually and face-to-face. The main proposition of all local institutes is to create engaging CPD for their members to support their development needs and improve their technical, professional and revision skills.

As well as offering social events such as annual dinners, quizzes, golf days and much more to ensure that members have fun networking opportunities. The organisation of these events offers a variety of opportunities to hone and improve skills and connections that you might not have in your day-to-day job.

The roles also include engaging with companies within your area, with local schools, delivering charity support and much more.



The main proposition of all local institutes is to create engaging CPD for their members to support their development needs and improve their technical, professional and revision skills.

## What's in it for me?

The rewards are endless! Here's how current council members benefit from being involved:



### Play a part in shaping your local institute's activity

From CPD to social, sports to charity and annual dinners, there are many different activities you can play a part in delivering.



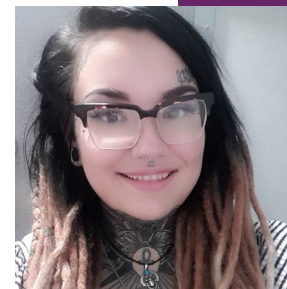
### Make new connections - which can further your career in the insurance profession

Working alongside professionals from other insurance companies can open doors to new opportunities. Your network is your net worth.



### Learn new transferable skills

These could include 1) event management, 2) member communications or 3) public speaking.



“Joining my local institute's council has given me the opportunity to voice my opinions on events and topics that will shape our current and future activities. I am now involved in both educational and social avenues that I was not previously.”

**Jordana Ireland**  
Local Assist Division Manager,  
Insurance Solutions Group

## The membership advantage

Membership makes insurance professionals better by enhancing your credibility, giving you a home within a community of like-minded individuals and the resources to achieve your career aspirations. Volunteering as part of your local institute helps you to encompass all of these values.



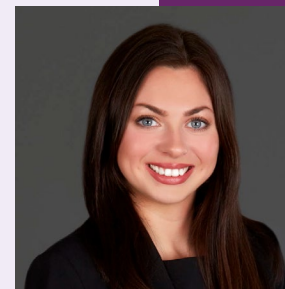
## Member testimonials

“I’ve really enjoyed working with Jersey’s President Debbie Duarte to re-engage our institute with local businesses, meeting with owners and directors to explain what we offer to insurance professionals on Jersey. With the help of our council we have recruited new members, identified new sponsorship opportunities and secured support for an insurance careers day. Honestly, the sky’s the limit when it comes to what you can achieve when you set your mind to it!”



Casey Jones Cert CII  
New Business Underwriter,  
Insurance Corporation of the Channel Islands Limited

“Attending events organised by the ISE have been both a blast and a great opportunity to network with others in the insurance and wider financial services industry. The relationships you forge can really open doors – a group of us are heading to Dublin next year for a weekend of rugby fun and a chance to strengthen professional relationships between the respective Scottish and Irish markets.”



Rhea Ingram-Smith  
Associate (Insurance & Reinsurance Regulatory),  
DLA Piper

# Joining your local institute's council can be challenging, exciting and rewarding.

To find out more, contact your local institute's President. You'll find their contact details here:

[cii.co.uk/membership/local-institutes](https://cii.co.uk/membership/local-institutes)

## **Chartered Insurance Institute**

Registered office:

3rd Floor, 20 Fenchurch Street,  
London EC3M 3BY

tel: +44 (0)20 8989 8464

[customer.serv@cii.co.uk](mailto:customer.serv@cii.co.uk)

[cii.co.uk](https://cii.co.uk)

 [@CIIgroup](https://twitter.com/CIIgroup)

 [Chartered Insurance Institute](https://www.linkedin.com/company/chartered-insurance-institute)