



Chartered
Insurance
Institute

Standards, Professionalism, Trust.

NEXT
PAGE



About us

The Chartered Insurance Institute



What do we do?

NEXT
PAGE



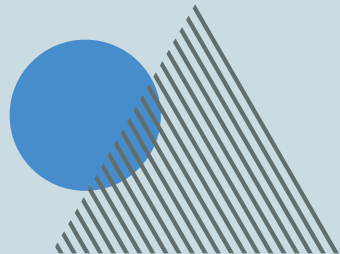
MEMBERSHIP

We are here to support the career development of people in insurance and financial planning, whether they are a new entrant or a professional looking to keep ahead of the curve.

Membership is open to anyone working in or connected to insurance and financial planning. Eligible students and teachers in the UK are also welcome to join through our Discover membership.

Whatever your ambitions, CII membership will align you with high professional standards and will give you the opportunity to shape your career the way you want, at your own pace.

Find out more at: cii.co.uk/membership



The New Gen Group

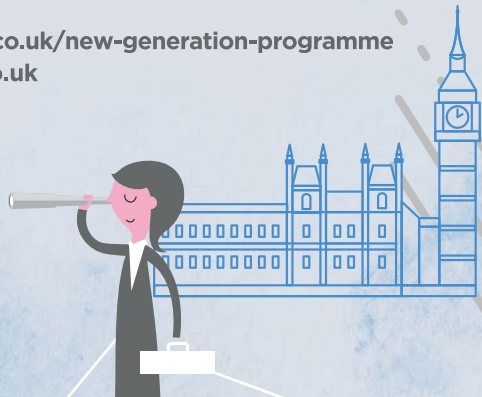
NEXT
PAGE

The CII New Generation group is a **talent programme** that helps develop future leaders in insurance across claims, underwriting, broking and the London Market.

This flagship initiative is valued across the insurance profession, as well as by politicians and policymakers, and New Gen groups have won numerous awards over the years for their projects.

The programme includes: a tour of the Houses of Parliament; talks from experts in the insurance sector; a session with the Financial Conduct Authority; and strategic thinking and media training.

For more information, visit: cii.co.uk/new-generation-programme or email newgeneration@cii.co.uk



Insuring Futures

NEXT
PAGE



Insuring Futures is an umbrella programme of works aimed at enhancing the profession's role in society and engagement with consumers.

Our first key initiative under this programme focuses on **women and risk**

It has three specific areas of focus:

- Women's risks in life
- Risk solutions for women
- Careers in risk for women



For more info, visit: insuringwomensfutures.co.uk

We also actively support sector-wide initiatives such as the Access to Insurance Working Group, which seeks to improve access to insurance for disabled consumers.

For the latest on these and other initiatives, visit: cii.co.uk

Insuring
**women's
Futures**



Who are we?

NEXT
PAGE



We are a **professional body** dedicated to building public trust in the insurance and financial planning profession through relevant learning, insightful leadership and an engaged membership.

We have more than 125,000 members all over the world who commit to high professional standards by maintaining continuing professional development and adhering to our Code of Ethics.

Local institutes

Members can access **56 local institutes** across the UK, so when you become a member of the CII, you also become a member of a local institute, usually close to where you live or work.

Local institutes provide:



Events



Training



Networking



Career
guidance



Local news

Find out more at: [fivebigwords.co.uk](https://www.fivebigwords.co.uk)

Societies



Personal
Finance
Society

NEXT
PAGE



While we are all part of a united profession, we recognise that individual segments within our membership have specific needs from a professional standards perspective – that is why we have our Societies.

The core objectives of the Societies is to raise professional standards through a focus on professional ethics and culture, good practice guidance, thought leadership and a dedicated programme of continuing professional development.

Our Societies

- **Personal Finance Society**
- **Society of Insurance Broking**
- **Underwriting** – *coming soon*
- **Society of Mortgage Professionals**
- **Society of Claims Professionals**

For more information, visit: cii.co.uk/membership/societies

International



Chartered
Insurance
Institute

英國特許保險學會香港

International growth is a key part of our strategy, with **38 affiliated institutes** plus offices in Hong Kong, India and Dubai helping enhance our presence in these markets and form strategic alliances and partnerships.

Corporates



NEXT
PAGE



We work with employers to support staff in their professional development through our range of company-wide training solutions.

One example is **Assess** – a training, testing and compliance system which features more than 500 insurance related courses and more than 300 courses relating to pensions, investment, taxation and protection. We also run qualifications, face-to-face training and accreditation schemes.

Find out more at: cii.co.uk/for-corporates

Chartered



**More than 900
firms proudly
display corporate
Chartered status**

Chartered status is a symbol of technical competence. It demonstrates that you are at the forefront of your profession and serves as a mark of trust.

As a Chartered body of more than a century's standing, the Chartered Insurance Institute grants Chartered titles to individuals and organisations that uphold the Chartered ethos.

Qualifications

NEXT
PAGE



We provide **professional qualifications** from essential core units to advanced studies, and aspiring and established professionals can choose the learning pathway that fits their job role and career aspirations.

Education outreach

Our education outreach programme raises the profile of insurance and financial planning as a career and highlights its wider contribution to society. The programme also delivers elements of financial competency to local secondary schools and colleges across the whole of the UK.

This pro bono programme is delivered by trained volunteers who are insurance or financial planning professionals and aims to be the largest programme of its type in the UK.

Learn more at: discoverrisk.co.uk



Heritage

NEXT
PAGE



In 1912, the Federation of Insurance Institutes of Great Britain and Ireland was granted a Royal Charter by the Privy Council of King George V and became the Chartered Insurance Institute.

Today, Queen Elizabeth II is patron of the CII, the fourth head of state to have been bestowed the honour since her grandfather, King George V, who, after granting the Royal Charter, opened the CII headquarters at Aldermanbury, London, in 1934.

The Queen played a key role in the Institute's development in 1987, when she updated the Royal Charter, which requires us to 'secure and justify the confidence of the public'.



King George V outside the London Insurance Hall, 1912



Chartered
Insurance
Institute

Standards. Professionalism. Trust.



21 Lombard Street,
London,
EC3V 9AH

T: +44 (0)20 8989 8464

W: charteredinsuranceinstitute.co.uk