



The Insurance
Institute of London
Chartered Insurance Institute

The Insurance Institute of London

CII CPD accredited - demonstrates the quality of an event and that it meets CII/PFS member CPD scheme requirements.

This lecture and podcast count as 45 minutes of CPD and can be included as part of your CPD requirement should you consider it relevant to your professional development needs. It is recommended that you keep any evidence of the CPD activity you have completed and upload copies to the recording tool as the CII may ask to see this if your record is selected for review.



DEMENTIA: HOW CAN WE INSURE OUR FUTURES?

In partnership with

Insurance
**united
against
dementia**



Chartered
Insurance
Institute
Standards. Professionalism. Trust.

Thursday 05
October 2017

Dementia research and why it matters



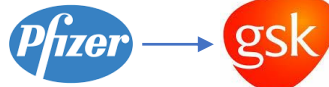
Diane Hanger

King's College London
Denmark Hill Campus



My research story

Pharmaceutical industry research



GlaxoSmithKline

PhD



Dementia research

Postdoctoral fellow



Independent Research Fellowship



Senior Lecturer



Reader
Professor



Who does dementia affect?

850,000 people living
with dementia in the UK

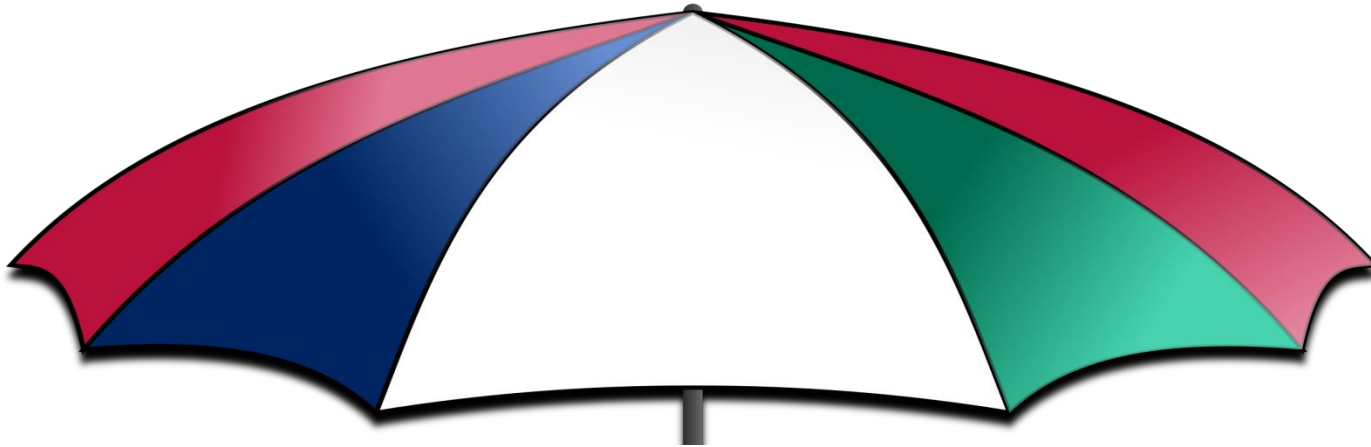
Predicted to increase to
1,000,000 people
with dementia by 2021

1 in 3 people have a friend
or family member with dementia

700,000 informal carers

£26 billion/year
cost of dementia
to the UK economy

What is dementia?



More than 50 different conditions can cause dementia:

Alzheimer's disease (>50% of all dementia)

Vascular dementia

Dementia with Lewy bodies

Frontotemporal dementia

Motor neuron disease

Parkinson's disease

Huntington's disease

Creutzfeldt-Jacob disease

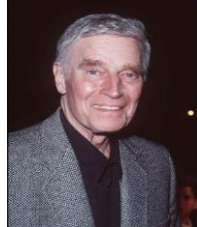
What is dementia and who is affected?



James "Scotty" Doohan



Prunella Scales



Charlton Heston



Rita Hayworth



Terry Pratchett



Iris Murdoch



Harold Wilson



Enid Blyton



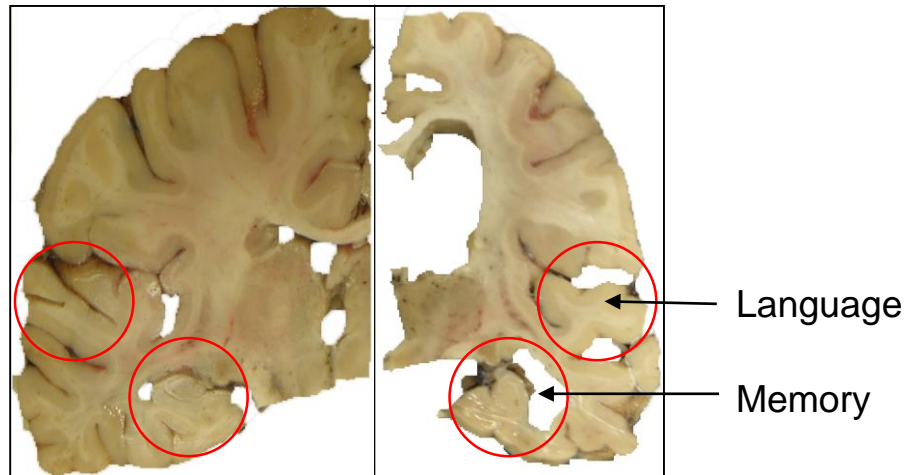
Ronald Reagan

Dementia doesn't discriminate
Dementia is caused by disease of the brain
Dementia results in loss of nerve cells
Dementia is not a normal part of ageing

Brain changes in dementia

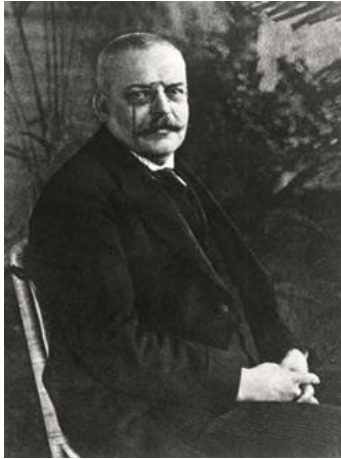
Healthy

Dementia

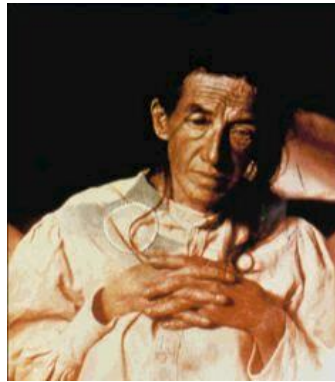


**There are no cures for dementia and
no effective disease modifying treatments**

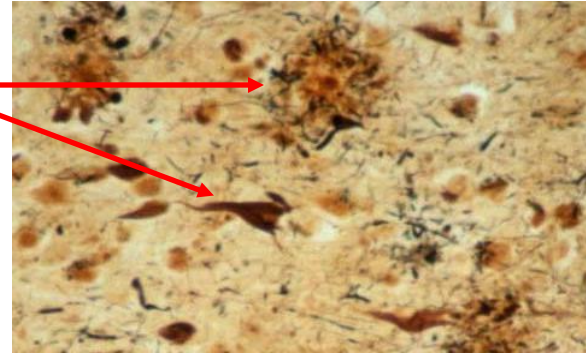
Microscopic changes in the brain



Alois Alzheimer 1906



Auguste Deter



Brain slice

Plaque
- **Amyloid**

Tangle
- **Tau**

Tau



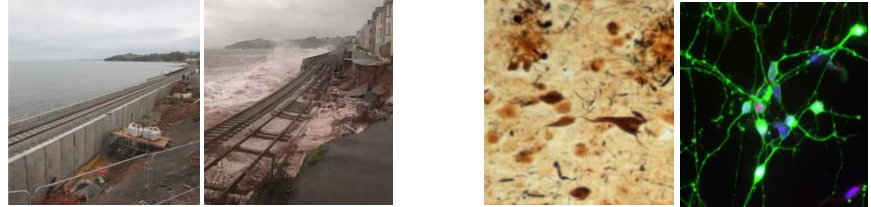
Abnormal tau can damage
nerve cells

We need more research to
discover why this happens

What needs to be done?

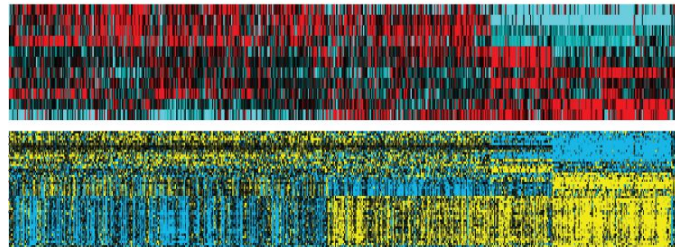
Understand disease mechanisms

How are nerve cells damaged?
New drug targets are urgently needed



New biomarkers

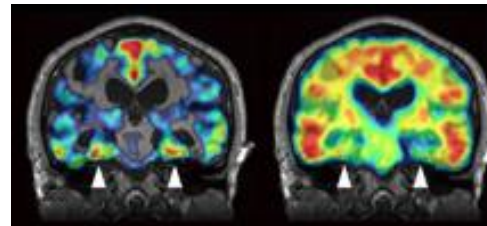
To measure disease progression
and effects of drugs



Recognising
disease
patterns

New diagnostic tests

For early diagnosis and treatment



Drug discovery

To identify new treatments
that stop disease progression



**Many drugs have failed in clinical trials
More research is needed to find effective treatments**

Investing in dementia research

Pharmaceutical industry research



GlaxoSmithKline

PhD



Dementia research

Postdoctoral fellow



GlaxoSmithKline

Independent Research Fellowship



Independent research

Senior Lecturer



Reader

Professor



What's next?

Find out more:

alzheimers.org.uk/iuad

iuad@alzheimers.org.uk

Insurance
**united
against
dementia**

In partnership with





The Insurance
Institute of London
Chartered Insurance Institute

Feedback

Please take a moment to complete this Feedback Form. Your comments will enable us to ensure that future CPD activities satisfy the needs our members.

To access the survey, scan this Quick Response code with your QR reader app on your mobile phone

